



MONTGOMERY PARKS
FOUNDATION

FOCUS

FOUNDATION

SPRING • 2023



DONOR SPOTLIGHT

Meet Barbara Waite-Jaques

Meet Barbara Waite-Jaques of Silver Spring, Maryland. She has been a loyal contributor to the Montgomery Parks Foundation, on behalf of Brookside Gardens, since 2011. Barbara has lived in Montgomery County since 1970. She is a retired math teacher from Montgomery County Public Schools and taught at Springbrook and Magruder High Schools, to name a few. Barbara serves Montgomery County in many ways through her loyal giving. In 2003, she generously donated a memorial bench at Brookside Gardens in honor of her beloved husband. In 2004, she became a docent at the Wings of Fancy Live Butterfly & Caterpillar exhibit. As a master gardener, she answers gardening questions through an online portal for the University of Maryland's Master Gardener program. Additionally, she's been a volunteer at the Brookside Gardens Conservatory since 2005. Her greatest love is her membership with Friends of Brookside Gardens, for which she served as president and now as secretary. She hopes her love for green spaces inspires the next generation to care for their environment, support their local parks, and be mindful of the climate. The Montgomery Parks Foundation thanks Barbara for her service and support. She adds value and impact to what we do everyday. Thank you, Barbara Waite-Jaques!

From the Desk of the Executive Director

Welcome to our first edition of *Foundation Focus*! We are so excited to bring you this newsletter to share the amazing ways your support has impacted our parks. Throughout these pages you will learn about happenings around the parks, hear inspiring stories of neighbors making a difference in their community, and see some of the exciting projects your gifts support. It's thanks to advocates and donors like you that our parks can continue to thrive. We can't wait to show you all the ways you make a difference. Enjoy!

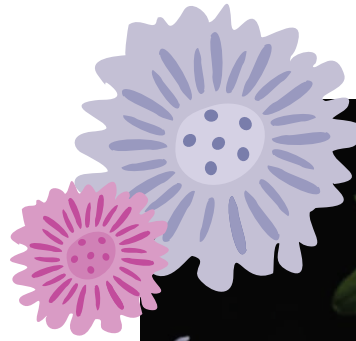
ASK AN EXPERT!

When is the best time to prune azaleas?

A: Excellent question! The answer depends on why you are pruning. If there are diseased, dying, or dead sections of your azalea shrub, feel free to use your pruners to remove those parts immediately. If this is the case, please make sure to sterilize your cutting implement after pruning to avoid spreading the problem. Also, it is best to cut the branch to a latent bud or a branch axis in healthy tissue. If you are pruning to improve shape or reduce size, you should prune right after the plant blooms up until the middle of July. Pruning any time after July may remove the flower buds for the next year, resulting in few or no flowers the following spring and summer. To minimize stress to the plant, the best time to prune may be late winter or early spring. This is an especially good time to prune for rejuvenation. Though pruning at this time will remove the flower buds for the upcoming season, it allows the plant to focus on growing new leaves and branches, ultimately resulting in a healthier plant. However, this type of pruning should not be done every year. In summary, do not prune in late summer or fall unless you are removing dead, dying, or diseased plant parts. Otherwise, pruning at this time will stimulate growth that could be damaged or killed when cold winter temperatures arrive. If you know your goals for pruning, you can choose the most appropriate time to prune and keep your plant healthy.

Happy Gardening!

Keely Shaughnessy, Horticulturist at Brookside Gardens



BROOKSIDE GARDENS

Azalea & Rhododendron Tour with Keely

Wednesday May 3 | Friday May 5, 2023

Register at ActiveMONTGOMERY.org



Marye Wells-Harley Dream Camp Scholarship Fund

To honor Marye Wells-Harley's legacy to parks and recreation in our area, the Marye Wells-Harley Dream Camp Scholarship Fund was created to support children with demonstrated need in making their summer camp dreams a reality.

JUMP. CLIMB. PLAY. DIG. EXPLORE.

This summer, we are sending 34 Montgomery County children to camp thanks to the support of loyal donors to the Marye Wells-Harley Dream Camp Scholarship Fund. The Camp Scholarship Fund ensures that all children, aged 3-18, have access to an exciting summer camp experience. The Montgomery Parks Foundation is pleased to administer and award these scholarships. Have fun, kids!



The Board of Trustees Transforms

ROYCE HANSON At the end of 2022, Royce Hanson concluded his 12 years of service on the Board of Trustees. During his tenure Royce faithfully served the Commission, Montgomery County, and the community. He provided perspective, continuity, and growth to the Montgomery Parks Foundation. Join the Foundation in giving Royce a standing ovation and sending him our best wishes on his future endeavors.

ARUNA MILLER Let's give Aruna "a round of applause" for her service to the Montgomery Parks Foundation. Aruna's passion, expertise, and experience helped strengthen and advance our mission. She is leaving the Montgomery Parks Foundation to serve as our newly elected Lieutenant Governor. We wish you well!

CATHERINE MATTHEWS Please help us welcome Catherine Matthews – the newest member to the Board of Trustees! She brings with her 20 years of service and experience working at the Upcounty Regional Services Center of Montgomery County Government. Catherine will provide guidance on policies, procedures, programming, fundraising, and general community relations. Welcome, Catherine!

BOARD OF TRUSTEES

OFFICERS

Devin Ellis, *President*
Marye Wells-Harley, *Vice President*
John Robinson, *Treasurer*
Clara Lovett, *Secretary*

AT LARGE

Rhonda Cunningham-Holmes
Trish Heffelfinger
Jane Houlihan
Shawn Jenkins
Catherine Matthews

EX-OFFICIO

Michael Riley, *Director, Montgomery Parks*
Jeffrey Zyontz, *Planning Board Chair*

FOUNDATION STAFF

Katie Rictor, *Executive Director*
Lois Brown, *Development Manager*
Anna Joyce, *Donor Relations Associate*
Jaclyn Riedel, *Marketing and Corporate Sponsorship Manager*



Bench Tribute Program

Looking for a way to celebrate or honor a loved one? A Tribute bench in one of our 400+ Montgomery County Parks is the perfect way to leave a legacy. Our benches come with a ten-year guarantee and are a true asset to our park system. These benches not only pay tribute to a loved one but help make our parks more beautiful and accessible for all to enjoy. For more information, please contact Anna Joyce at anna.joyce@montgomeryparks.org or at 301-495-2511.



MONTGOMERY PARKS
FOUNDATION

2425 Reedie Drive
12th Floor
Wheaton, MD 20902

Damascus Recreational Park

This spring, make Damascus Recreational Park your first outdoor adventure. Seated on 284 acres, Damascus Park offers many outdoor athletic fields and courts for everyday recreational fun. There are multiple lighted sports courts and fields for you to enjoy, and even three shelters for you to share a picnic with family and friends. Come play and stay awhile!

Don't miss it! While visiting the park, be sure to check out the Wind Harps sculpture by Rodney Carroll, a tall musical sculpture located at the rural hilltop setting of Damascus Park. The wind-activated sculpture features tall red arcs that provide an elegant contrast to the park's lush greenery as they reach toward the sky. The beautiful cello-like music varies based on the natural rhythms of the wind. For those who choose to linger around the base of the Wind Harps, you will be rewarded with the music of the wind.



MONTGOMERY PARKS
FOUNDATION



montgomeryparksfoundation.org